

NORTH LAKE SQUARE

SWC NORTH LAKE AVENUE & WASHINGTON BOULEVARD | PASADENA, CALIFORNIA

Available Space:

5,474sf

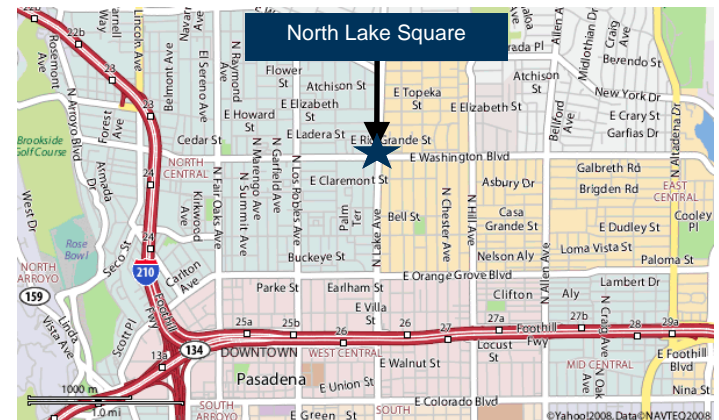


For leasing information, contact:

Stacy Aguirre
(310) 314-2579
saguirre@wattcompanies.com

Watt Companies, Inc.
2716 Ocean Park Blvd.
#3040
Santa Monica, CA 90405

(888) 310-WATT
(310) 314-2430
www.wattcompanies.com



PROPERTY DETAILS:

- Extremely dense trade area
- Busy neighborhood center anchored by Food 4 Less
- Tenants include Gamestop, Payless Shoes, Subway

DEMOGRAPHIC HIGHLIGHTS:

Estimates	1 Mile	3 Miles	5 Miles
Population	40,093	179,243	356,172
Average Household Income	\$70,827	\$88,969	\$100,211

Source: Claritas 2009

TRAFFIC COUNTS:

Intersection	Cars Per Day
Lake & Washington	45,000

Source: City of Pasadena, 2003

Owned and Managed by:



(888) 310-WATT

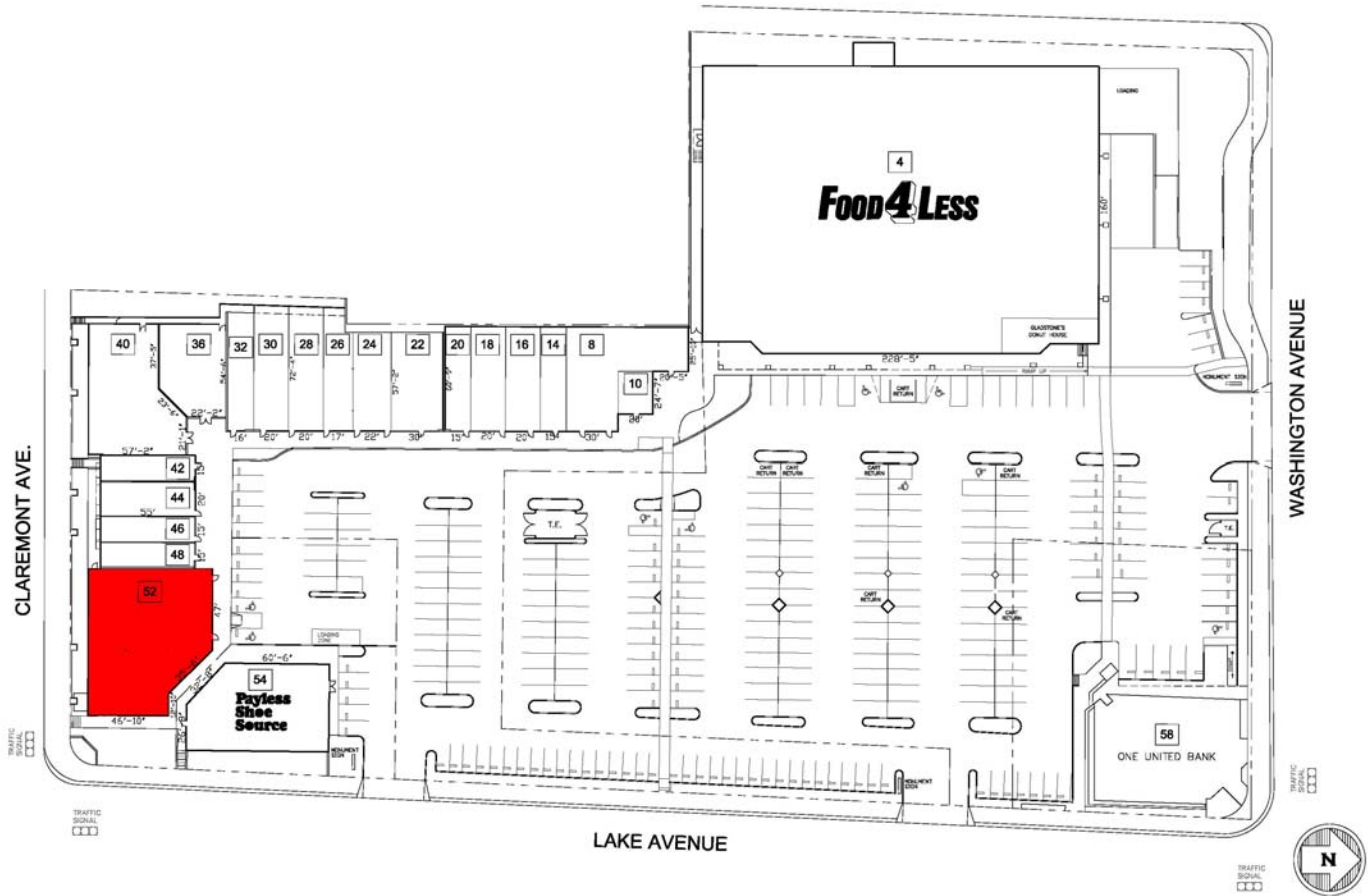
(310) 314-2430

www.wattcompanies.com

NORTH LAKE SQUARE

NORTH LAKE AVENUE & WASHINGTON BOULEVARD | PASADENA, CALIFORNIA

TENANT LEGEND		
SUITE	TENANT	SF
4	FOOD 4 LESS	39,674 sf
8	RENT A CENTER	2803 sf
10	WATERIA 1 HR PHOTO	500 sf
14	SOUTHERN STATE INSURANCE	902 sf
16	Q VIDEO	1203 sf
18	MIRACLE CLEANERS	1204 sf
20	EXPERT NAILS	904 sf
22	SAVE PLUS	1970 sf
24	PIZZA HUT	1127 sf
26	VIP TOBACCO	1037 sf
28	PIACCI'S	1410 sf
30	SUBWAY	1412 sf
32	MAKI YAKI	1010 sf
36	TWO BOYS BEAUTY	2100 sf
40	STYLE 7	3601 sf
42	H & R BLOCK	825 sf
44	GAMESTOP	1100 sf
46	SALSA PICANTE	825 sf
48	KING WOK	825 sf
52	AVAILABLE	5474 sf
54	PAYLESS SHOE SOURCE	3939 sf
58	ONE UNITED BANK	7000 sf



For leasing information, contact:

Stacy Aguirre
 (310) 314-2579
 saguirre@wattcompanies.com

Watt Companies, Inc.
 2716 Ocean Park Blvd.
 #3040
 Santa Monica, CA 90405

(888) 310-WATT
 (310) 314-2430
 www.wattcompanies.com

JOIN THESE RETAILERS:



Owned and Managed by:



(888) 310-WATT

(310) 314-2430

www.wattcompanies.com

The information herein has been secured from sources we believe to be reliable; however, Watt Companies makes no guarantees, warranties or representations as to the completeness or accuracy thereof. The presentation of this property is submitted subject to errors, omissions, changes of price or conditions prior to the sale or lease, or withdrawal without notice.