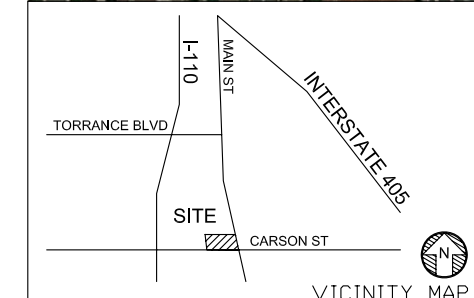
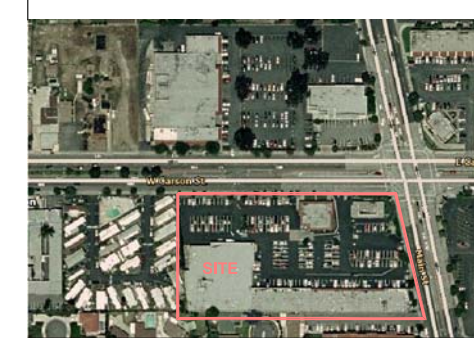
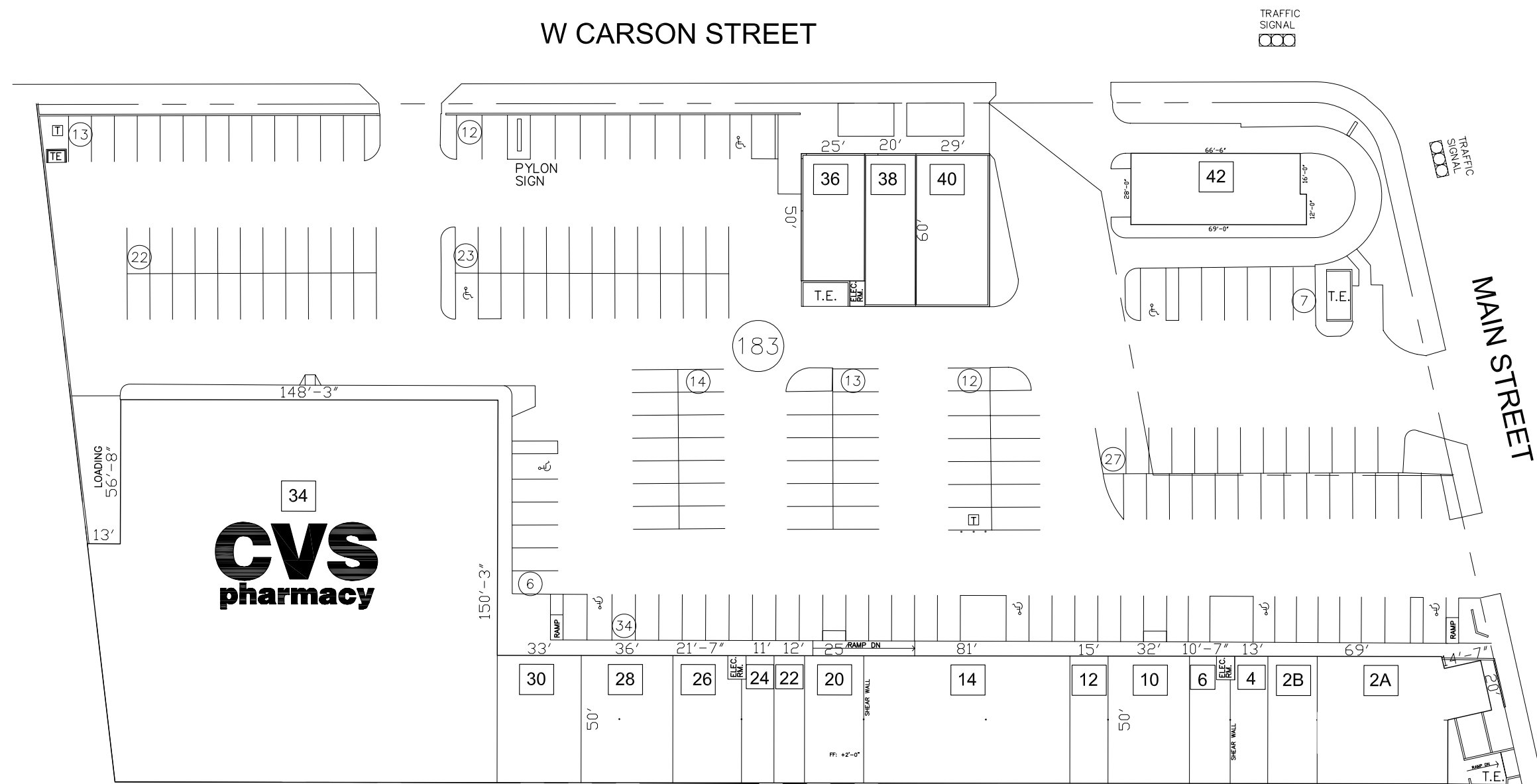


TENANT LEGEND

SUITE	TENANT	SF
2A		2865 sf
2B		971 sf
4	PATRICK'S WATCHES	580 sf
6	ADVANCE AMERICA	695 sf
10	MANILA LECHON REST	1600 sf
12	MERINO BAKERY	750 sf
14	TAMBULI MARKET	4050 sf
20	H & R BLOCK	1162 sf
22	LEWIS CLEANERS	550 sf
24	HERBAL TOUCH	600 sf
26	CARSON FAMILY DENTAL	1300 sf
28	EMILIO PADRE MD	1800 sf
30	GOLD N' NAILS	1650 sf
34	CVS	22,851 sf
36	POPEYES	1250 sf
38	CHOW FUN	1200 sf
40	CITIFINANCIAL	1740 sf
42	BLUE LOTUS	1848 sf



TOTAL BUILDING SF:	47,710 SF
PARKING PROVIDED:	183 STALLS
PARKING RATIO:	3.84/1000 SF
TRAFFIC COUNTS:	53,820 ADT (2007)

DEMOGRAPHICS	1 MILES	3 MILES	5 MILES
2007 EST. POP.	36,286	187,807	507,098
2012 PROJ. POP.	39,145	199,081	534,949
AVG. HH. INCOME	67,621	68,713	66,478

DISCLAIMER: THIS PLAN IS PROVIDED SUBJECT TO (i) ERRORS AND OMISSIONS IN THE INFORMATION AND (ii) MODIFICATION WITHOUT NOTICE. THE INFORMATION, SPECIFICATIONS, DIMENSIONS AND/OR TABULATIONS SET FORTH IN THIS PLAN HAVE BEEN DERIVED FROM DOCUMENTS BELIEVED TO BE RELIABLE. HOWEVER, THIS PLAN MAY BE INCOMPLETE AND/OR INACCURATE. NO REPRESENTATION OR WARRANTY, EXPRESSED OR IMPLIED AS TO THE ACCURACY OR ADEQUACY REGARDING SUCH INFORMATION IS MADE BY THE OWNER OF THE PROJECT, PROPERTY MANAGER OR ANY OTHER REPECTIVE PARTNERS, DIRECTORS, OFFICERS, EMPLOYEES AND AGENTS. NONE OF THE FOREGOING PARTIES SHALL HAVE ANY LIABILITY FOR SUCH ERRORS, OMMISIONS, INCOMPLETENESS OR INACCURACIES. ANY PERSON OR ENTITY REVIEWING THIS PLAN SHOULD MAKE THEIR OWN INDEPENDENT INVESTIGATION OF THE INFORMATION CONTAINED HEREIN.

CARSON SHOPPING CENTER
 100-154 W CARSON STREET CARSON, CA 90745
SITE LEASE PLAN

WATT COMPANIES
 2716 OCEAN PARK BOULEVARD
 SANTA MONICA, CA 90405
 T. 310.314.2430

SCALE: 0' 25' 50'
 Nov. 2, 09

 SHEET 1 OF 1